

User Guides

TF5800

www.topy.org.uk

A beginner's guide to installing TAPs on the Topfield TF5800PVR

Written by Tim Crook, for Topy.org.uk

TAPs are small applications that you can install on your TF5800 to provide additional features, or to make existing ones work more easily. You can find a database of TAPs and links to other sites at www.topy.org.uk

This guide is for Windows users; there's a separate guide available for Macintosh users.

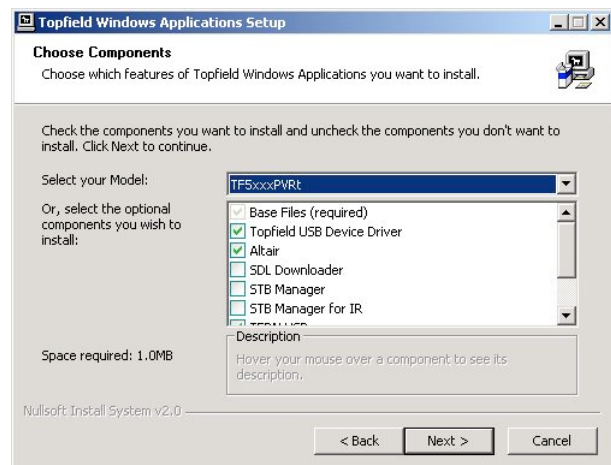
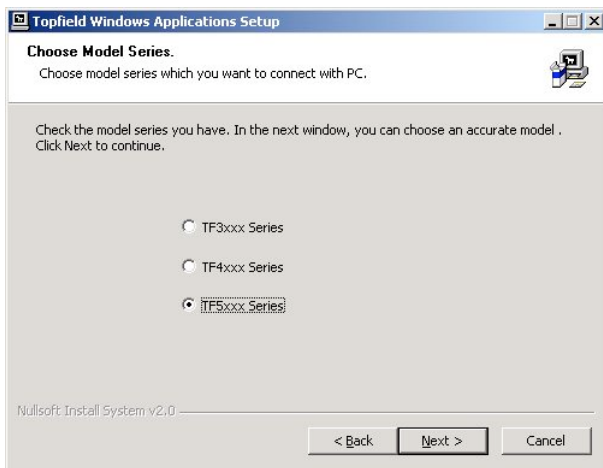
What you need

To get started, you'll need a Windows PC, with USB ports – preferably USB – and Topfield's Altair program.

Stage 1: Altair Installation:

1. Do not link your PC to the Topy yet. Make sure USB cable is unplugged at one or both ends.
2. Download the Altair program from Topfields's web site, or by following the links from www.topy.org.uk. The current version when this document was written was v1.250.
3. Unzip and install the software (make sure you are logged on with an account that has admin privileges).

When you see screenshot 1 (left), select the option for the 5xxx range, then select the PVRT model on the next screen (screenshot 2, below). Ensure that Altair and the USB Device Driver are both selected.

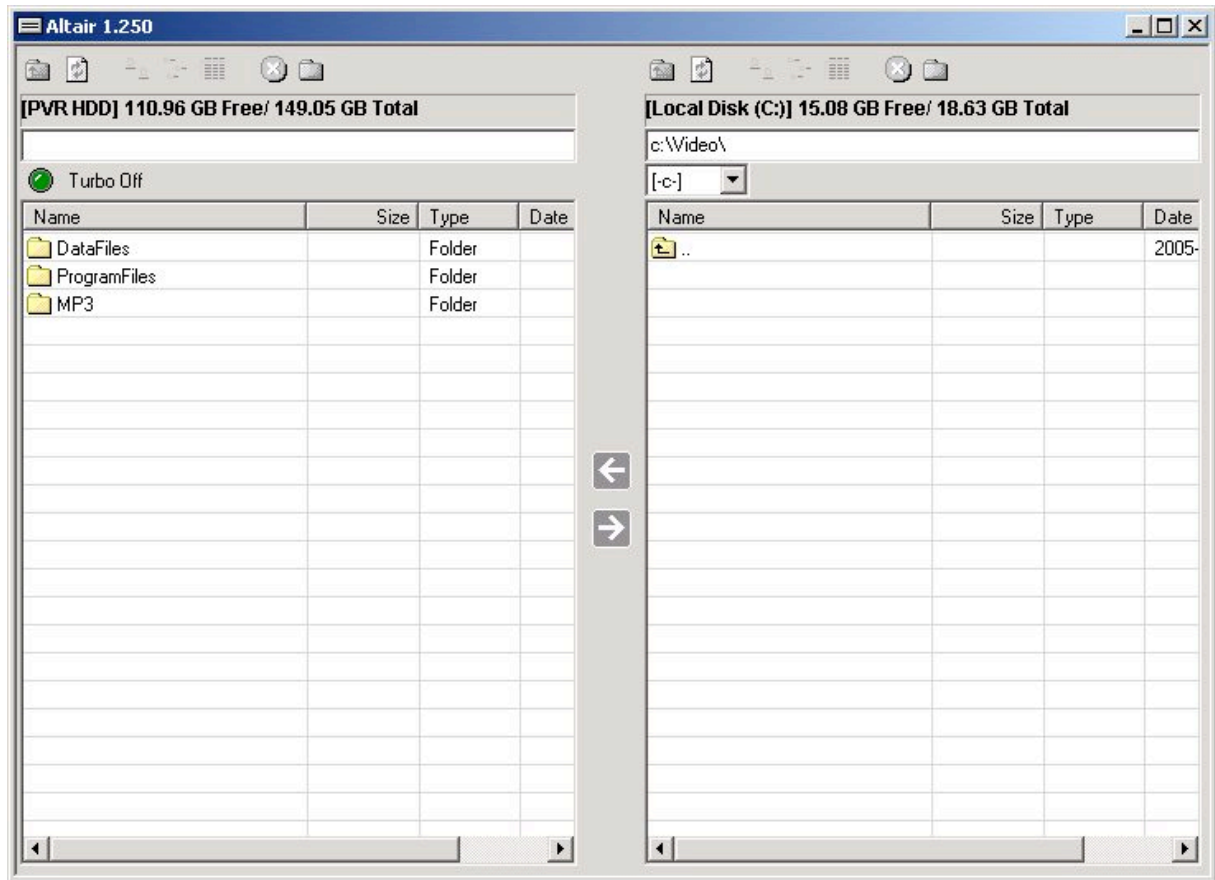


4. If prompted to reboot do so.

5. Connect the Topy to your PC with the USB cable and wait a few seconds for Windows to confirm that a new device has been installed. You're now ready to start installing TAPs.

Stage 2: Installing TAPs

1. Start Altair on your PC, and ensure that the Topy is turned on. (The Topy's disk drive may have to spin-up, so be patient) When the connection is established, you will see a window with two panes, as shown below in screenshot 3. On the left is the TF5800's disk drive, while the right hand pane shows the contents of your PC's hard drive.



2. Now, using the right hand pane, navigate to the directory where you downloaded the TAPs that you want to install. If they were supplied in Zip files, make sure you extract them first.

3. The left hand pane shows the top level of the Topy's folder structure. You should see something similar to the screenshot above, with three folders displayed.

- DataFiles* This folder contains your recordings
- ProgramFiles* This will contain your TAP's (and Auto Start folder)
- MP3* Store your mp3 music files here.

3. Double-click the *ProgramFiles* folder in the left hand pane to open it.

If your Topy is new, you will probably just see an empty folder; after you've run TAPs, there'll also be an *Auto-Start* folder, within *ProgramFiles*

4. Now, highlight the TAP file (or folder) that you want to copy to the TF5800 in the right hand pane, then click the left pointing arrow between the two panes, or drag the file to the left, and the transfer window will appear.

5. The transfer window will disappear when your file has been copied, and you will now see it in the list on the left of the window.

Stage 3: Running TAPs

1. Bring up the recorded services list on the Topy by pressing the Archive button on the remote control. Next, use the << or >> (Fast Forward/Rewind) keys to move to the *ProgramFiles* list. These keys move between the three top level folders – *DataFiles*, *MP3* and *ProgramFiles*. You should now see your newly installed TAP file in the list. Highlight it using the up and down arrows, then press 'OK' to start it.
2. The list will disappear and the TAP is now running. You should refer to the TAP documentation for detailed usage information.
3. TAPs that you place in the *AutoStart* folder will be started when the Topy boots, so you should make sure the TAP works as you expect before placing it in this folder. To move a TAP to the folder, select it in the list, but instead of pressing OK, press the yellow button to move it, then select the Auto Start folder and press OK again.
4. If you wish to temporarily prevent TAPs in the *AutoStart* folder from running when you turn on your Topy, press the '0' key on your remote control while the Topy boots. To permanently remove a TAP from the *AutoStart* folder, select the folder, press OK to open it, then highlight the TAP. Press the white button to delete it, or yellow to move it back to the main folder, which is denoted by .. at the top of the list of folders that will appear.

Notes:

A USB v1 cable will work (but you may notice a reduced transfer rate).

The Topy will accept long file names, and names can have spaces in them.

It's probably advisable to make sure the Topy is not recording when you experiment with TAPs or during the transfer of large files (recorded programs).

If you have problems with transfers, try a different USB cable; many people have found that the cables make quite a difference.